
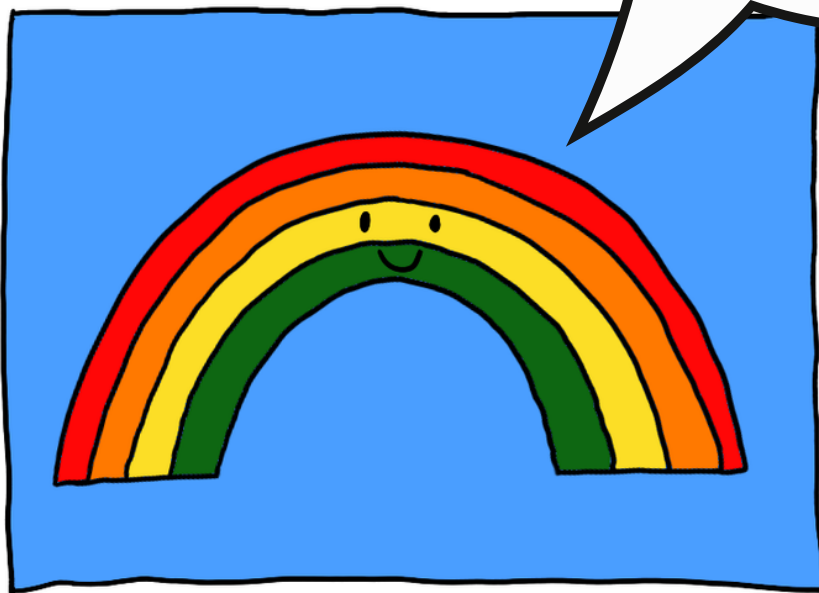


# LET'S MEET THE POWER RAINBOW!

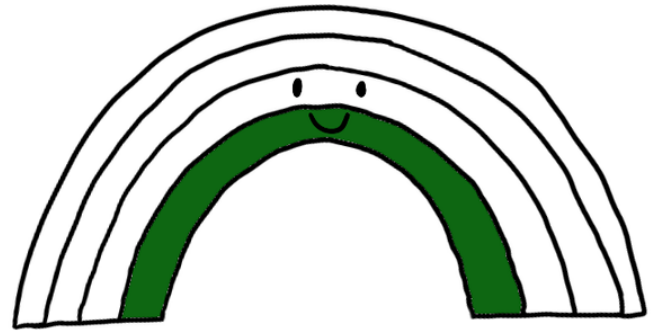
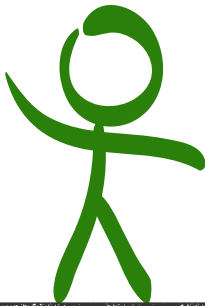


Hi! I'm the Power Rainbow. I help people understand how power works in the world around us. Have you ever heard the word power before? Each of my colors represents a different kind, or level, of power. Let me tell you more!



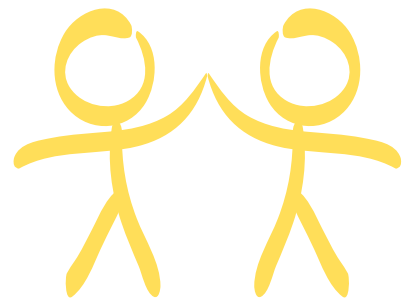
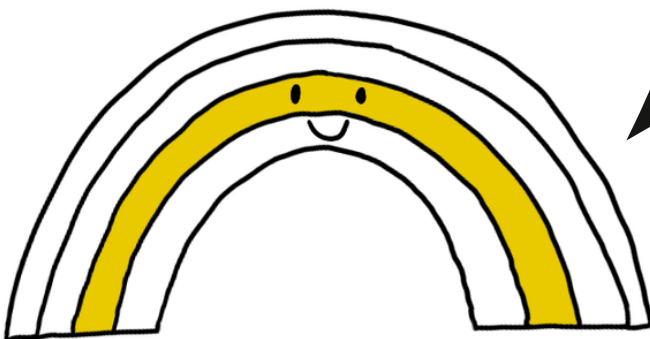
My green level represents the power of individual people. Have you ever thought about the power that YOU have? Everyone has power that comes from who they are, the things they care about, and the things they do.

## THE PERSON LEVEL



## THE RELATIONSHIPS LEVEL

My yellow level is about the power that people have within relationships. In your relationships with family members, friends, and classmates, you both have the power to choose how you will treat each other. What are the relationships where you have power?



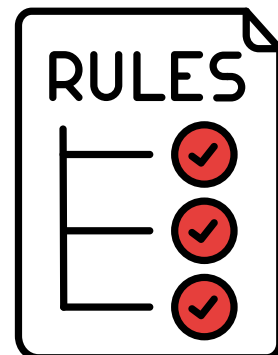
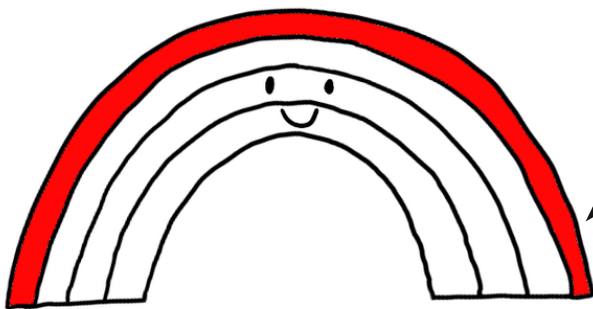
## THE GROUPS LEVEL

My orange level represents the power of groups of people working together. Groups of people work together in institutions (like schools or hospitals), in governments, and when people gather to protest. Working together, people have even more power to impact others and create change in the world.

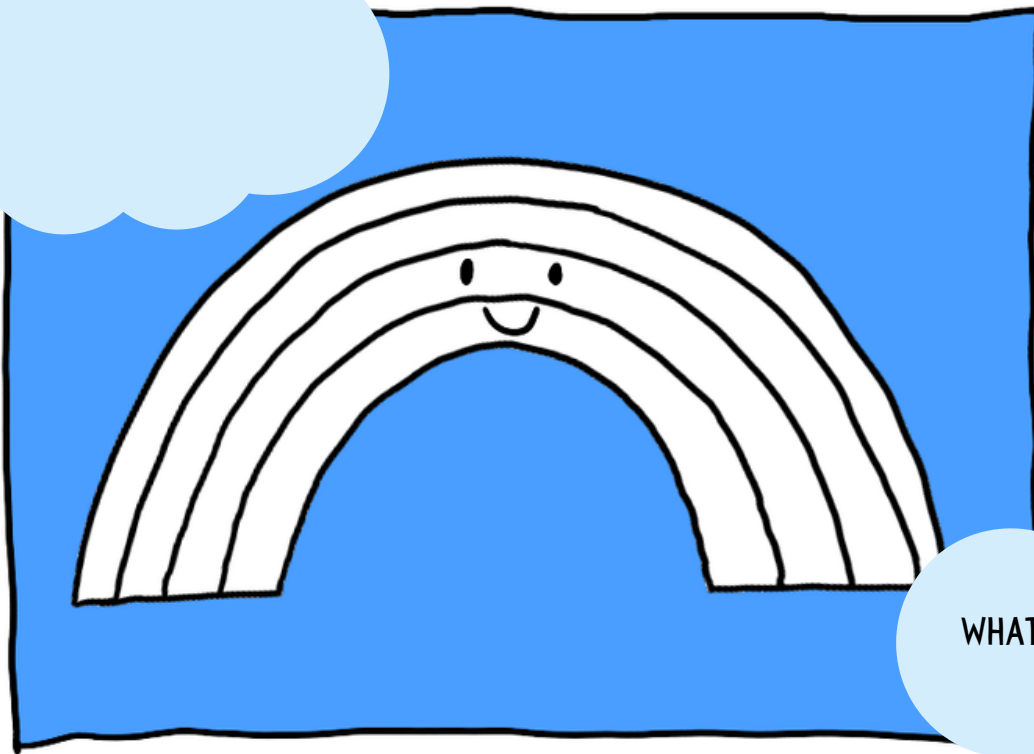


## THE RULES AND LAWS LEVEL

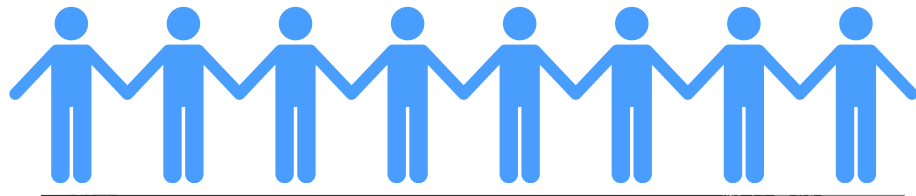
My red level represents the power of rules and laws. Rules and laws have power because they shape what people can and can't do. Can you think of any rules you have to follow? Do you know any laws that everyone needs to follow where you live? What happens if someone breaks one of those rules or laws?



# THE IDEAS AND VALUES LEVEL



WHAT DO WE BELIEVE IN? WHAT DO WE CARE ABOUT?



My blue level (the sky behind me) represents a kind of power that is sometimes harder to see, because it blends into the background. This is the power of the ideas and values people believe in. For example, some people believe in a religion and the things it teaches. Some people value equality or kindness. Some people care about things staying the same as they've always been, while other people care about creating change to make things better. When beliefs or values are shared by a lot of people across a community or society, they have the power to impact every level of the rainbow!